



SunSky®

Corrugated
Polycarbonate
Skylight and
Side Light Panels
for Advanced
Metal Buildings



Creating Solutions



High performance products like these rely on polycarbonate glazing to resist high impact, high winds, hailstorms, fire, temperature extremes, and long-term exposure to ultraviolet light...



the same conditions that skylights and side lights must resist.



CONTENTS

Description	3
Climatic Performance	4
Radiation Filtering	4
Thermal Insulation	4
Weathering	4
Weathering Properties	5
Uniform Load	6
Uplift	7
Hail Velocity	7
Typical Physical Properties	8
Soft White	9
Chemical Resistance	10

NEW
SOFT WHITE
 with 100% Diffusion
 SUNSKY CORRUGATED POLYCARBONATE
 SEE PAGE 9



SunSky
 CORRUGATED POLYCARBONATE

Description

For skylight and sidelite applications, SunSky® corrugated polycarbonate panels offer multiple advantages over traditional fiberglass corrugated panels: up to 20 times greater impact resistance, the highest light transmission rates, the lowest yellowing index, the highest load rating, and the highest resistance to wind uplift... outstanding properties

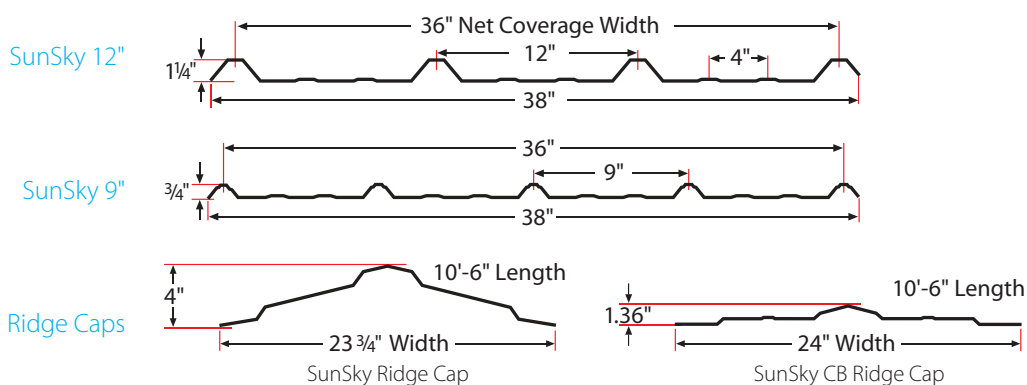
confirmed in accredited laboratory testing and in installations worldwide since 1984.

The panels are also available in custom profiles to match any corrugated metal roofing system, and in custom thickness to customer specifications (minimums apply).

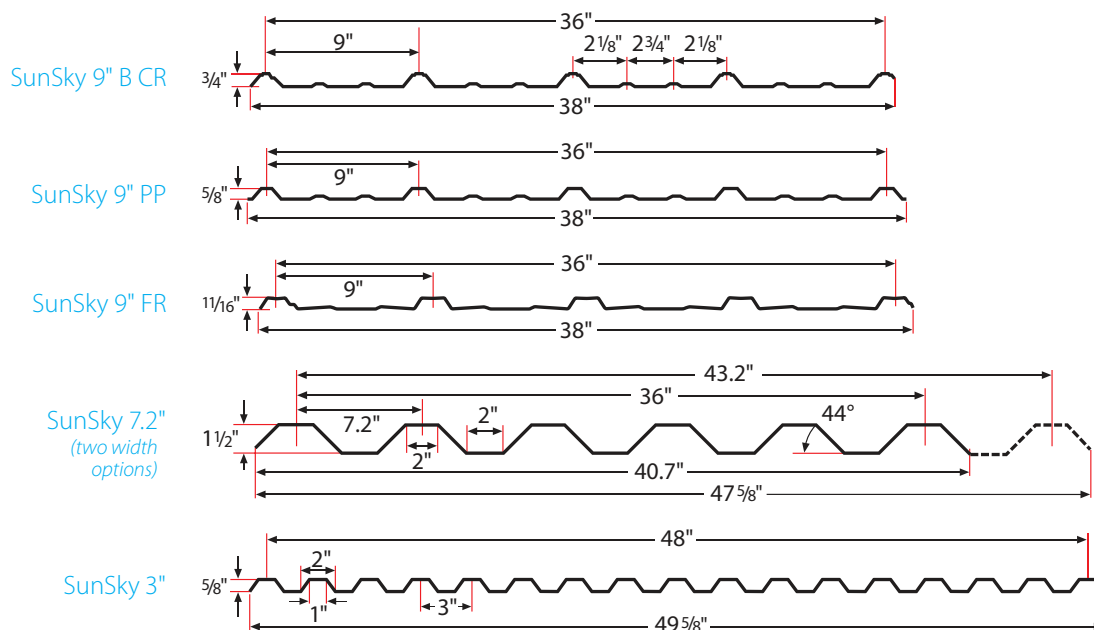
SunSky Features:

- Virtually unbreakable
- Self extinguishing
- Retains optical clarity over time
- Wide temperature range (-40°F to 210°F)
- Easily and safely Installed
- 10-Year warranty
- Hail and wind resistant
- 100% UV protection

Stock Profiles (Typically Readily Available)



Specialty Profiles* (Minimum Order Quantity & Lead Time Required)



Profile Description	Available Color/Tint	Thickness (in/mm)	Length
SunSky 9" all types, and 12"	Clear, Soft White and Opal White	0.032 / 0.80	8', 10', 10'-6", 11', 12', 16', 24'
SunSky 12"	Clear, Soft White and Opal White	0.039 / 1.00	8', 10', 10'-6", 11', 12', 16', 24'
SunSky 7.2"	Clear, Soft White and Opal White	0.039 / 1.00	Special Order
SunSky Ridge Cap	Clear, Soft White and Opal White	0.039/1.00	10'-6"

Custom lengths available. Lead time depends on production schedule and order quantity.

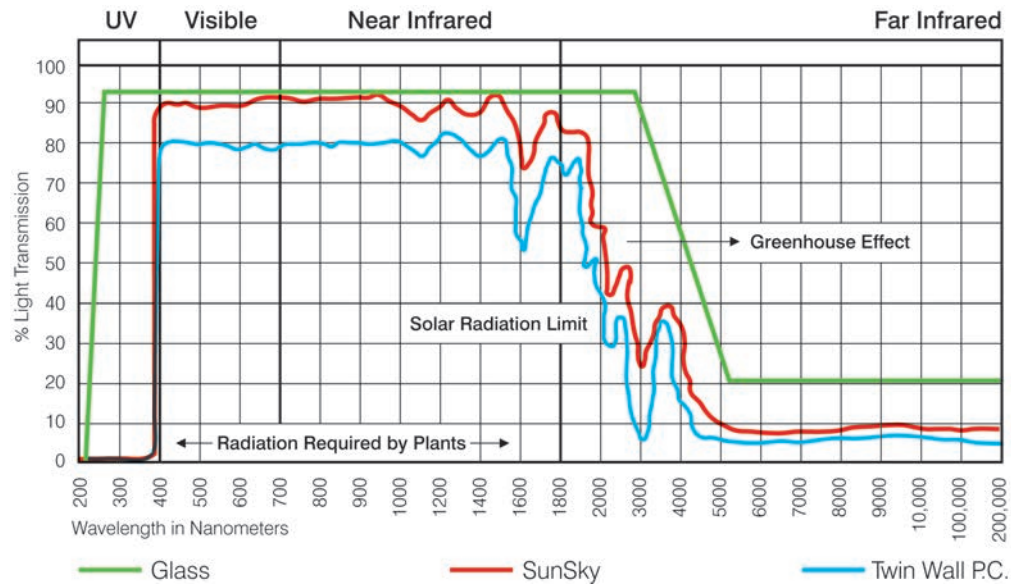
* Specialty profiles are typically not in stock, but can be produced provided minimum order requirements, lead time, and pricing considerations are met.

Radiation Filtering

SunSky Panels transmit radiation selectively. They form a complete shield against harmful ultraviolet rays which may scorch crops, while admitting most of the visible light, essential to crop health and photosynthesis. By completely blocking the far infrared rays, SunSky prevents heat loss at night. SunSky blocks both UV-A and UV-B.

Climatic Performance

SunSky Panels perform flawlessly under extremely harsh climatic conditions. Service temperature range -40° to 210° F, enabling unlimited use throughout the world.



Thermal Insulation

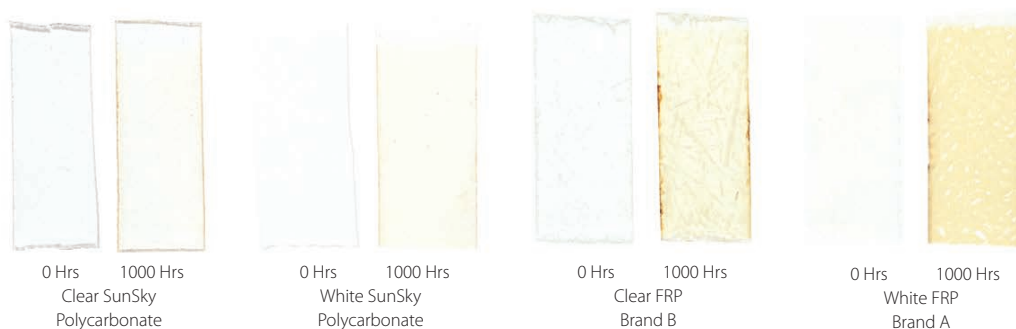
SunSky's heat conductivity is lower than fiberglass (FRP) sheets. These features facilitate considerable heating cost cuts, in comparison with fiberglass.

Weathering

Due to its coextruded built-in UV blocking and protecting layer, SunSky maintains its light transmission and physical properties and does not yellow: Arizona tests and accelerated QUV tests indicate a significant advantage of SunSky over competitive sheets such as twin wall polycarbonate and fiberglass.

QUV 1000 HOUR YELLOWING TEST

(roughly equivalent to 10 year actual exposure)

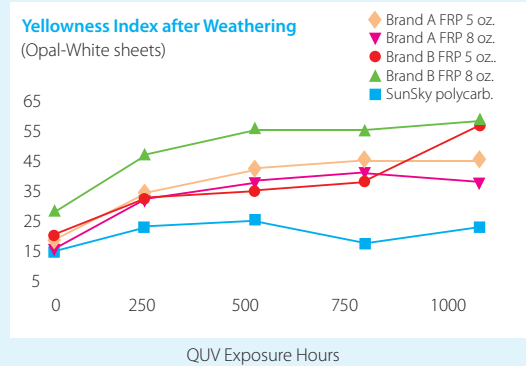
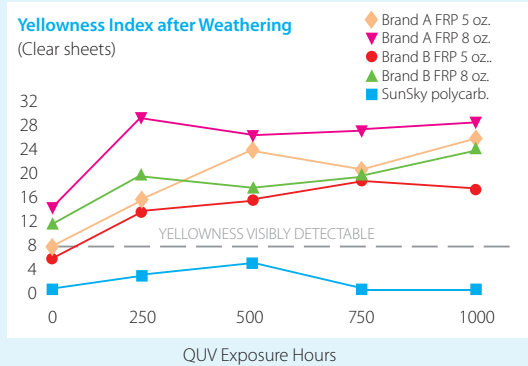


SunSky Corrugated Polycarbonate Panels exhibit significantly greater resistance to yellowing than fiberglass panels.

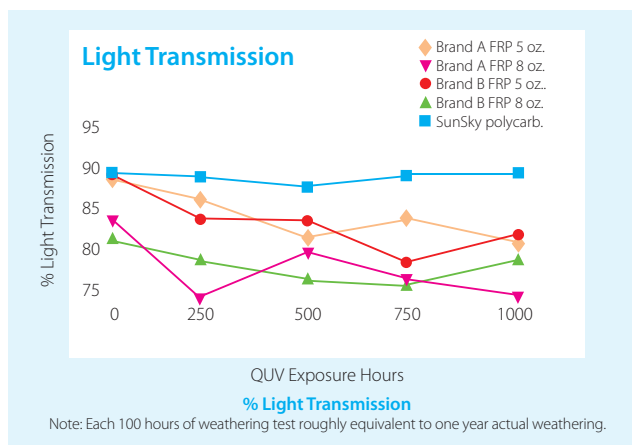
Weathering Properties

SunSky Corrugated Polycarbonate Panels demonstrate greater resistance to yellowing, and transmit more light, than fiberglass panels. The results from QUV testing depicted below demonstrate the superior performance of SunSky compared to competing products. 100 hours of QUV exposure is roughly equivalent to 1 year of actual outdoor exposure in Arizona.

Clear Materials	Exp. Hrs.	% LT Light Transmission	$\Delta\%$ LT Light Transmission	YI Yellowing Index	Δ YI Yellowing Index
SUNSKY Polycarbonate	0	91.2	0	1.26	0
	250	90.7	-0.5	4.27	3.01
	500	89.7	-1.5	6.69	5.43
	750	90.9	-0.3	3.78	2.52
	1000	91.2	0	3.70	2.44
Brand A FRP 5 oz.	0	90.3	0	9.89	0
	250	88.0	-2.3	18.25	8.36
	500	83.7	-6.6	24.43	14.54
	750	86.4	-3.9	22.43	12.54
	1000	83.3	-7.0	27.88	17.99
Brand A FRP 8 oz.	0	85.8	0	15.10	0
	250	75.4	-10.4	31.98	16.88
	500	82.7	-3.1	27.42	13.32
	750	79.3	-6.3	29.89	14.79
	1000	76.6	-9.2	30.45	15.35
Brand B FRP 5 oz.	0	90.5	0	7.17	0
	250	85.5	-5.0	14.83	7.66
	500	84.0	-6.5	16.74	9.57
	750	81.5	-9.0	20.68	13.51
	1000	83.8	-6.7	19.47	12.30
Brand B FRP 8 oz.	0	83.5	0	12.61	0
	250	81.7	-1.8	22.56	9.95
	500	79.2	-4.3	19.61	7.00
	750	78.2	-5.3	21.62	9.01
	1000	80.1	-3.4	26.97	14.36



Note: Each 100 hours of weathering test roughly equivalent to one year actual weathering.



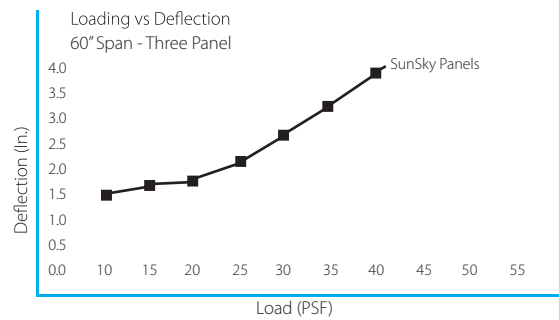
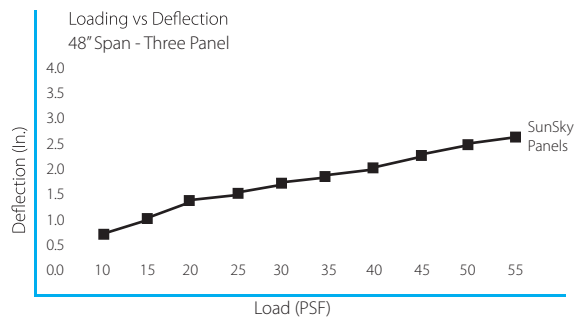
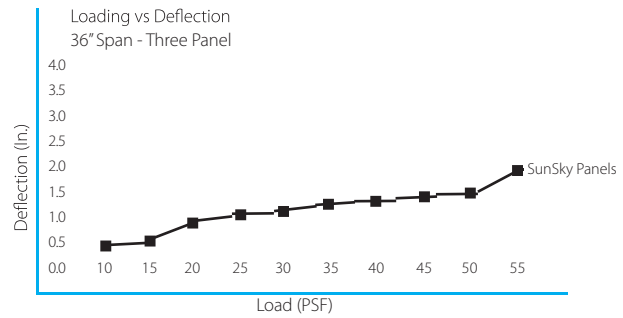
Note: Each 100 hours of weathering test roughly equivalent to one year actual weathering.

Uniform Load

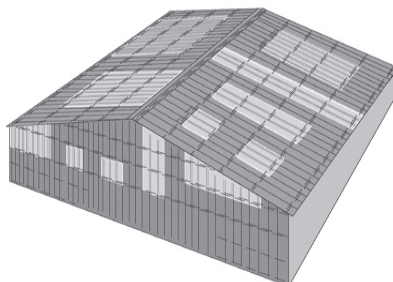
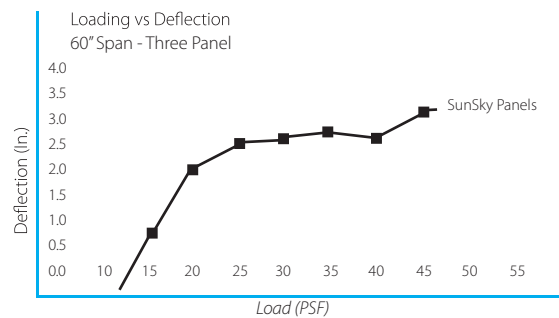
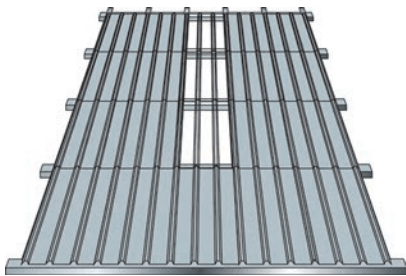
SunSky Corrugated Polycarbonate Panels had no mechanical failures or cracks at the end of any test to measure ultimate load when tested to "ICBO Evaluation Service Acceptance Criteria, AC 16 Plastic Skylights" (UL recognized file number 18450).

Note: The tables below are provided only as a guideline. Information was obtained from tests using SunSky polycarbonate panels as roofing and siding. To avoid premature failure, all proposed spans should be tested in actual tests. In addition, a licensed engineer or architect must verify the application.

Multi-Panel Runs for roofing and siding



Single-Panel Runs for roofing and siding



For detailed Installation Instructions
Contact Palram Americas and request:

SunSky Installation Guide Booklet

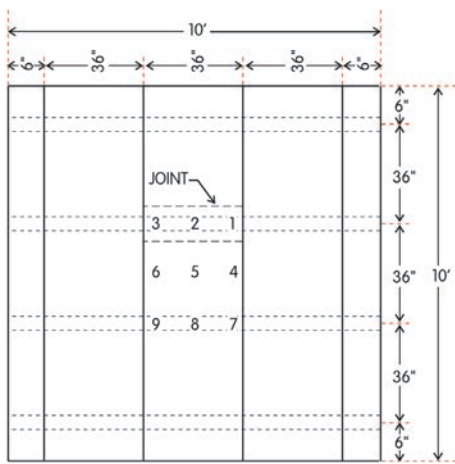
Uplift

SunSky corrugated polycarbonate panels meet Uplift Test Criteria specified in UL 580 Test for Uplift Resistance of Roof Assemblies (UL Class 90).

Test Description

Roof Covering: Corrugated polycarbonate roof panels with 9-inch spaced corrugations. The tested material is 0.032" thick x 38" wide and 12 feet long.

Fastener: #12-14 x 1 1/4" Type 2 Structural Drilling Fastener, carbon steel, zinc plate with 3/4" O.D. heavy EPDM/ galvanized washer.



Test Results

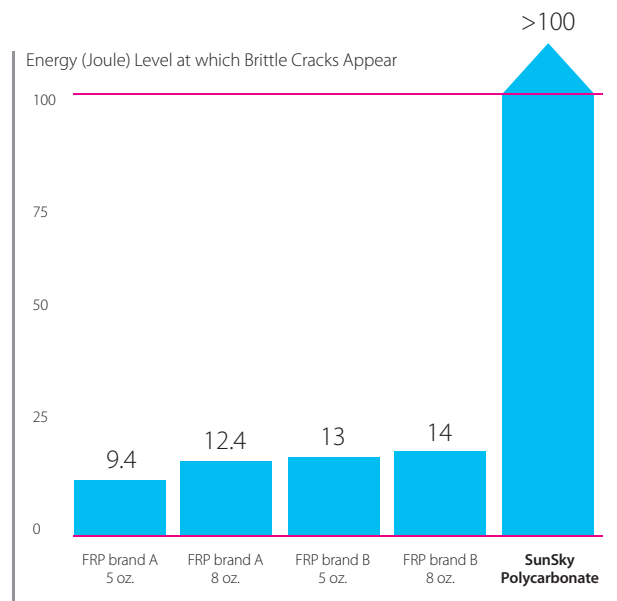
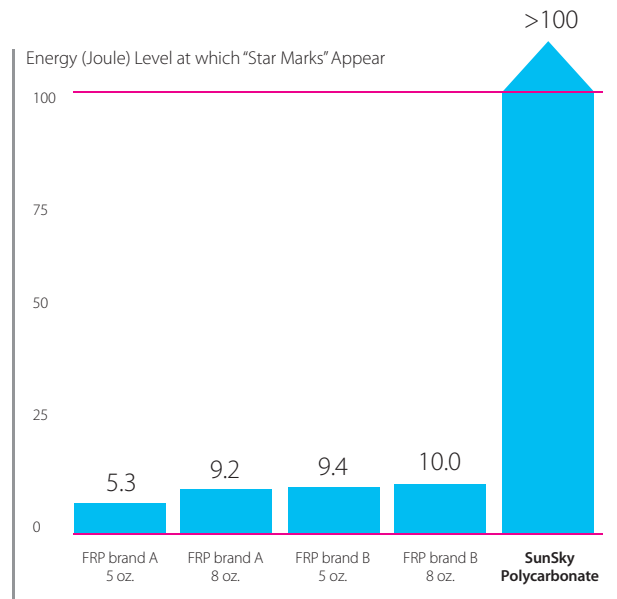
A buckled hip was visible during the test. The fasteners were in place and no cracks or breaks were found in the SunSky panels. The test assembly withstood all phases of test for Class 90. The roof assembly described in this report met the uplift test criteria specified in UL 580 - Test for Uplift Resistance of Roof Assemblies.

Note: The buckled hip returned to its original shape after testing with no panel damage or permanent deformation.



Hail Velocity

SunSky Corrugated Polycarbonate Panels demonstrate greater resistance to high-velocity impact (hail simulation test) than fiberglass panels.



Note: SunSky Corrugated Polycarbonate Panels remain ductile with no cracks or breaks at the maximum energy level at which this test is conducted: 100 Joules (1J=0.737 ft•lb)

Approvals

- Miami - Dade County Product Control* Approved Acceptance No. NOA 00-1226.02
*Highest U.S. Code Standards
- FBC Approval: Pending (Call for updated info)
- City of Los Angeles - Research Report RR25298

Typical Physical Properties

	Property	Test Method	Value
Physical	Specific gravity	ASTM D-792	1.2
	Density (lb./ft. ³)	ASTM D-1505	75
	Water Absorption, 24 hr. @ 73°F (%)	ASTM D-570	0.15
Mechanical	Tensile strength at yield, 0.4 in./min. (psi)	ASTM D-638	9,000
	Tensile strength at break, 0.4 in./min. (psi)	ASTM D-638	9,500
	Elongation at yield, 0.4 in./min. (%)	ASTM D-638	6
	Elongation at break, 0.4 in./min. (%)	ASTM D-638	>80
	Tensile Modulus, 0.04 in./min. (psi)	ASTM D-638	340,000
	Flexural Modulus 0.04 in./min. (psi)	ASTM D-790	380,000
	Flexural strength at yield, 0.04 in./min. (psi)	ASTM D-790	14,500
	Izod impact strength, notched (73°F), ft./lb./in.	ASTM D-256	1.5
	Impact falling weight, (ft.lb./in.)	ISO 6603/1 ^a	37
	Rockwell hardness, R scale	ASTM D-785	118
	OSHA point-29	CFR 1910.23 (e) (8) ^a	Passed 200 lb.
	Uplift	UL 580 ^b	Passed UL 90
Thermal	Optimal Temperature Range °F -40 to +210		
	U-Factor Summer	C-236	1.04
	U-Factor Winter	C-236	1.14
	Heat Deflection Temperature °F Load: 264 (psi)	ASTM D-648	275
	Coefficient of Linear Thermal Expansion 10 ⁻⁵ /°F	ASTM D-696	3.6
	Thermal Conductivity BTU in./(hr. ft ² °F)	ASTM C-177	1.46
Flammability	Self-Ignition (°F)	ASTM D-1929	977
	Burning Extent	ASTM D-635	CC2 (<2.5 in.)
	Smoke Density (%)	ASTM D-2843	51
	Smoke Developed	UL 723 (E-84) ^a	47.0
	Flame Spread	UL 723 (E-84) ^a	4.7 (Class A)
	Melt Point (°F)	ASTM D-1519-95	420
Electrical	Dielectric Constant:		
	1 kHz	ASTM D-150	2.6
	1 MHz	ASTM D-150	2.4
	Dissipation Factor:		
	1 kHz	ASTM D-150	0.005
	1 MHz	ASTM D-150	0.02
	Dielectric Strength Short:		
	500 V/s (V/mil.)	ASTM D-149	520
	Surface Resistance:		
	Ketley (Ohm)	ASTM D-257	4.1 x 10 ¹⁵
Volume Resistance:			
Ketley (Ohm-cm)	ASTM D-257	1.7 x 10 ¹⁷	
Optical	Visible light transmittance (%)		
	Clear	ASTM D-1003	90
	Soft White	ASTM D-1003	85
	Opal White	ASTM D-1003	45
	Haze/Diffusion (%)		
	Clear	ASTM D-1003	<1
	Soft White	ASTM D-1003	100
	Opal White	ASTM D-1003	100
	Yellowness Index)		
	Clear	ASTM D-1003	<1
	Soft White	ASTM D-1003	<3
	Opal White	ASTM D-1003	<1
	Shading coefficient		
	Clear	ASTM E424-71	1
	Soft White	ASTM E424-71	.96
	Opal White	ASTM E424-71	.56

^a All the results depicted in this table were obtained by following the indicated ASTM method except where another method is indicated by the appearance of this symbol (^b)

Increase Productivity while Reducing Energy Costs with... SunSky Soft White

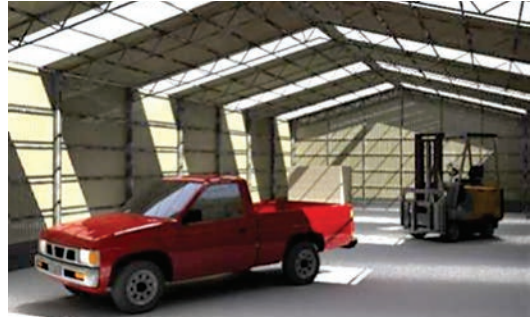
Let the beauty of natural sunlight in, without the harshness! Translucent SunSky Soft White panels allow 85% light transmission, for light that fills the room without unpleasant glare or the stark contrast of hard-edged shadows.

SunSky Soft White panels provide diffused, omni-directional ambient light, creating a more comfortable, worker-friendly environment for enhanced productivity. They're perfect for skylights, ridge lighting and vertical side lights all of which can decrease energy costs by reducing the need for daytime electric lighting. And the soft white coloration is co-extruded with the polycarbonate, so it will never peel or wear off.

SunSky Soft White is available in all of our standard or custom profiles.

All of the features of our SunSky Clear panels... Without the Glare!

- 85% Light Transmission vs. 90% for Clear
- Soft/Diffused Light for a More Productive Environment
- Virtually Unbreakable • Blocks 100% of Harmful UV Rays
- Service Temperature Range for All Climates
- Light Weight • Easy to Install



Clear skylight panels can create a harsh indoor lighting environment, with glaring sunlight in some areas and stark shadows in others.

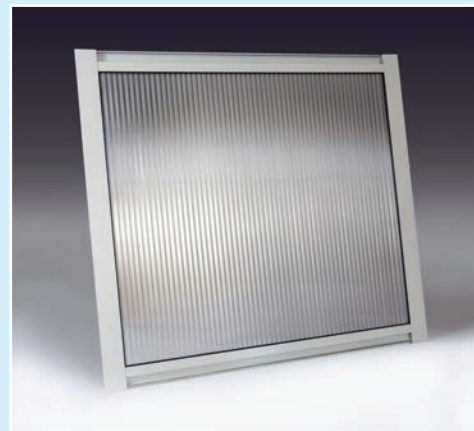


SunSky Soft White panels fill the room with natural light, for better all-around visibility and a more productive work area.

Need Insulated side lights? Consider SUNLITE Multi-Wall Polycarbonate.



If you have an application that requires insulated side lights, consider SUNLITE® multi-wall polycarbonate. Because SUNLITE has multiple air spaces between the inner and outer surfaces, it provides excellent insulation. To learn more about equipping your building with SUNLITE, contact your Palram Distributor. Ask for our Applications Idea Sheet (form #1201).



Features at a Glance

- Energy saving design
- Rigid and light weight
- Highly impact resistant
- Up to 80% light transmission for maximum light
- Virtually unbreakable
- 10-year warranty
- Easy to install
- 100% UV protection
- 200 times stronger than glass

Chemical Resistance

The mechanism of chemical attack on polycarbonate sheets differs significantly from the mechanism of corrosion of metals. Corrosion of metals results in a gradual loss of surface material as a result of electrolytic action by the relevant chemicals. In the cases where chemical attack on polycarbonate sheet occurs, all or a portion of a range of effects can be observed. Ethylene chloride, chloroform, tetrachloroethane, m-cresol, pyridine and other chemicals can cause partial dissolution of polycarbonate. Swelling agents include benzene, chlorobenzene, tetralin, acetone, ethyl acetate, acetonitrile and carbon tetrachloride. Additional effects include color change and/or whitening. These effects may not always lead to product failure, especially for non-loaded sheets. Nevertheless, the level of measured mechanical properties will be reduced. The most critical effect of chemical attack is stress cracking or crazing, which may range in size from being visible to the naked eye to being only visible under a microscope. Stress cracks will always result in sheet failure which will emanate from areas of greatest stress (screws, fixings, bends, etc.)

Polycarbonate sheets are generally not recommended for use with acetone, ketones, ethers, and aromatic and chlorinated hydrocarbons in addition to aqueous or alcoholic alkaline solutions, ammonia gas and its solutions and amines.

Polycarbonate is resistant to mineral acids, many organic acids, oxidizing and reducing agents, neutral and acid salt solutions, many greases, waxes and

oils, saturated, aliphatic and cycloaliphatic hydrocarbons and alcohols, with the exception of methyl alcohol. The resistance of polycarbonate to water may be described as good up to approximately 60°C. At higher temperatures, degradation occurs, the extent of which depends on time and temperature. Polycarbonate should therefore not be exposed for long periods of time to hot water. However, brief contact with hot water has no effect. For example, polycarbonate tableware can be washed over 1000 times in a dishwasher with no adverse effects.

The table that appears below lists the resistance of polycarbonate sheets to a number of commonly encountered chemicals and other corrosive media at room temperature (Information on chemical resistance at higher temperatures will be supplied upon request). Where the chemical resistance varies with concentration, the results of tests at different concentrations is presented. The information on chemical resistance is based on our research and experience (information on compatible adhesives can be found on page 18 of the SunSky Installation Guide), and serves as a basis for recommendation. Palram Americas does not guarantee chemical resistance unless specific separate, documentation is supplied.

For chemicals and corrosive media not depicted in the list, please contact your Palram Americas representative.

Chart Key:

R = Resistant

LR = Limited Resistance

N = No Resistance

Chemical	Concentration %*	Resistance	Chemical	Concentration %*	Resistance	Chemical	Concentration %*	Resistance
Acetaldehyde		N	Benzyl Alcohol		N	Cloves		N
Acetic Acid	10	R	Betadine		R	Coal Gas		R
Acetic Acid	25 (concentrated)	LR (N)	Bleach (Clorox)		R	Coca Cola		LR
Acetone		N	Blood and Blood Plasma		R	Cocoa		LR
Acetylene		R	Borax		R	Cod Liver Oil		R
Acrylonitrile		N	Boric Acid		R	Coffee		LR
Ajax Detergent		R	Brake Fluid		N	Cooking Oil		R
Allspice		N	Bromine		N	Copper Sulfate	Saturated	R
Allyl Alcohol		LR	Bromobenzene		N	Cresol		N
Alum (Aluminum Ammonium Sulfate)		R	Butane		R	Cupric Chloride	Saturated	R
Aluminum Chloride	Saturated	R	Butter		R	Cuprous Chloride	Saturated	R
Aluminum Oxalate		R	Butyl Acetate		N	Cyclohexane		R
Aluminum Sulfate	Saturated	R	Butyl Alcohol (Butanol)		R	Cyclohexanol		LR
Ammonia (Gas)		N	Butylene Glycol		R	Cyclohexanone		N
Ammonia (Aqueous)		N	Butyric Acid		N	DDT		R
Ammonium Carbonate		LR	Calcium Chloride	Saturated	R	Dekalin		R
Ammonium Chloride		R	Calcium Hypochlorite		R	Detergent (most)		LR or R
Ammonium Fluoride		N	Calcium Nitrate		R	Developing Solutions		N or LR
Ammonium Hydroxide		N	Calcium Soap Fat		R	Diamyl Phthalate		N
Ammonium Nitrate		R	Camphor Oil		N	Diesel Fuel		R
Ammonium Sulfate	Saturated	R	Carbolic Acid		N	Diethyl Ether (Ethyl Ether)		N
Ammonium Sulfide		N	Carbon Bisulfite		R	Dimethyl Formaldehyde (DMF)		N
Amyl Acetate		N	Carbon Dioxide Gas (Moist)		R	Dimethyl Sulfoxide (DMSO)		N
Amyl Alcohol		LR	Carbon Disulfide		N	Dinonyl Phthalate (plasticizer)		LR
Aniline		N	Carbon Monoxide		R	Doctyl Phthalate (plasticizer)		LR
Antimony Trichloride	Saturated	R	Carbon Tetrachloride		N	Dioxane		N
Aqua Regia (3 parts HCl:1 part HNO ₃)		LR	Castor Oil		R	Diphyl 5,3		LR
Arsenic Acid	20	R	Catsup (Ketchup)		R	Ethanol (Ethyl Alcohol) and Water	96	R
Automatic Switch Grease		R	Caustic Potash (Potassium Hydroxide)		N	Ethanol (Ethyl Alcohol)	Pure	LR
Automotive Waxes		LR	Caustic Soda (Sodium Hydroxide)		N	Ethyl Amine		N
Baby Lotion		R	Chlorine Gas (Dry)		LR	Ethyl Acetate		N
Bacon Fat		R	Chlorine Gas (Wet)		N	Ethyl Bromide		N
Barium Chloride		R	Chlorobenzene		N	Ethylene Chloride		N
Battery Acid		R	Chloroform		N	Ethylene Chlorohydrin		N
Beer		R	Chocolate		R	Ethylene Dichloride		N
Beet Syrup		R	Chrome Alum	Saturated	R	Ethylene Glycol (Antifreeze)		LR
Benzaldehyde		N	Chromic Acid	20	R	Ferric Chloride	Saturated	R
Benzene		N	Cinnamon		R	Ferrous Sulfate		R
Benzoic Acid		N	Citric Acid	10	R	Fish and Fish Oils		R

*concentration of aqueous solution except where noted

The chemical resistance information in this table is based on our research and experience and may be considered solely as a basis for recommendation, but not as a guarantee, unless specifically furnished as such by Palram Americas.

Chemical	Concentration %*	Resistance	Chemical	Concentration %*	Resistance	Chemical	Concentration %*	Resistance
Floor Polish		R	Nitric Acid	20	R	Sodium Carbonate	Saturated	R
Formalin	10%	R	Nitrobenzene		N	Sodium Chlorate		R
Formic Acid	10% (30%)	R (LR)	Nitropropane		N	Sodium Chloride	Saturated	R
Freon TF		R	Nitrous Oxide		N	Sodium Chromate		R
Freon (all others)		N	Nutmeg		N	Sodium Hydroxide		N
Fruit Juices and Pulp		R	Oleic Acid		R	Sodium Hypochlorite	5% Chlorine	R
Gasoline		N	Onions		R	Sodium Nitrate		N
Gear Oil		R	Oxalic Acid	10	R	Sodium Sulfate	Saturated	R
Glazers Putty		R	Oxygen		R	Sodium Sulfide		N
Glucose		R	Ozone		N	Sodium Thiosulfate		R
Glycerine		R	Paprika		R	Spindle Oil		R
Glycerol		R	Paraffin		R	Stannous Chloride		R
Glycols		R	Pentane		R	Starch		R
Glutaraldehyde	50%	R	Pepper		R	Styrene		N
Grease, Automotive (Most)		R	Perchloric Acid	10 (concentrated)	R (LR)	Sugar	Saturated	R
Heptane		R	Perchloroethylene		N	Sulfur Dioxide (Gas)		R
Hexane		R	Petroleum		LR	Sulfuric Acid	<50 (50<70)	R (LR)
Hydrazine		N	Petroleum Ether		LR	Sulfurous Acid	10	N
Hydrochloric Acid	20 (Concentrated)	R (N)	Petroleum Oil (Refined)		R	Sulfuryl Chloride		N
Hydrofluoric Acid	20	R	Phenol		N	Tapping Oil		R
Hydrogen Peroxide	30	R	Phosphoric Acid	10	R	Tartaric Acid	30	R
Hydrogen Sulfide		R	Phosphorous Oxychloride		R	Tear Gas (Chloracetophenone)		LR
Iodine (aqueous solution)	5	R	Phosphorous Pentoxide	25	LR	Terpineol		N
Iodine		N	Phosphorous Trichloride		N	Tetrahydrofuran		N
Inks (Most)		R	Polyethylene		R	Tetralin		N
Isoamyl Alcohol		LR	Polyethylene Glycol		R	Thiophene		N
Isopropyl Alcohol		R	Potassium Acetate		LR	Thyme		R
Kerosene		N	Potassium Aluminum Alum (Sulfate)	Saturated	R	Titanium Tetrachloride		R
Lactic Acid	20	R	Potassium Bichromate		R	Tobacco		R
Lacquers and Thinners		N	Potassium Bromate		R	Toluene		N
Laundry Detergents (Most)		LR or R	Potassium Bromide		R	Transformer Oils		R
Ligroin (Hydrocarbon Mixture)		R	Potassium Chloride	Saturated	R	Transmission Fluid		R
Lime Solution (2%) or paste		R	Potassium Cyanide		N	Trichloroacetic Acid	20	LR
Liquors or Liqueurs		R	Potassium Dichromate	Saturated	R	Trichloroethylamine		N
Linseed Oil		R	Potassium Hydroxide		N	Trichloroethylene		N
Loctite		N	Potassium Metabisulfite	4	R	Trichloroethylphosphate		LR
Lubricating Oils (Most)		LR or R	Potassium Nitrate	Saturated	R	Tricresylphosphite		N
Machine Oils (Most)		R	Potassium Perchlorate	10	R	Trisodium Phosphate		R
Magnesium Chloride	Saturated	R	Potassium Permanganate	10	R	Turpentine		LR
Magnesium Sulfate	Saturated	R	Potassium Persulfate	10	R	Urea		R
Manganese Sulfate	Saturated	R	Potassium Rhodanide	Saturated	R	Vacuum Pump Oil		R
Margarine		R	Potassium Sulfate	Saturated	R	Vanilla		R
Mayonnaise		R	Propane		R	Vanillin		R
Meat		R	Propargyl Alcohol		R	Varnish		N
Mercuric Chloride	Saturated	R	Propionic Acid	20	R	Vaseline		R
Mercury		R	Propionic Acid	Concentrated	N	Vegetable Juices		R
Methane		R	Propyl Alcohol (1-Propanol)		R	Vegetable Oils		R
Methanol (Methyl Alcohol)	Pure	LR	Pyridine		N	Vinegar		R
Methylamine		N	Salad Oil		R	Water (DeminerIALIZED or Sea)		R
Methylcellulose		N	Salt		R	White Spirit		N
Methylene Chloride		N	Silicofluoric Acid	30	R	Wine, Whiskey, Vodka, Rum, Cognac		R
Methyl Ethyl Keton (MEK)		N	Silicone Grease		R	Witch Hazel		R
Methylmethacrylate		N	Silicone Oil		R	Worcester Sauce		R
Milk		R	Silver Nitrate		R	Xylene		N
Mineral Oil		R	Soap (Ivory)		R	Zinc Chloride		R
Motor Oils (Most)		LR or R	Sodium Bicarbonate	Saturated	R	Zinc Oxide		R
Mustard		R	Sodium Bisulfate	Saturated	R	Zinc Stearate		R
Naphtha (Stanisol)		N	Sodium Bisulfite	Saturated	R	Zinc Sulfate		R
Nickel Sulfate		R						

*concentration of aqueous solution except where noted

The chemical resistance information in this table is based on our research and experience and may be considered solely as a basis for recommendation, but not as a guarantee, unless specifically furnished as such by Palram Americas.

**10-Year Limited Light
Transmission Warranty***

It is warranted that for a period of 10 years, SunSky polycarbonate panels shall not lose more than 10% of their light transmitting capability, as a direct and exclusive result of the impact of solar radiation (as measured pursuant to the procedures specified in ASTM D-1003-77).

**10-Year Limited
Hail Damage Warranty***

It is warranted that for a period of 10 years, SunSky polycarbonate panels shall not break as a direct and exclusive result of the impact of hail measuring up to one inch diameter in size, and attaining up to 20 meters/sec. in velocity.

** This brochure contains statements of general company policy concerning customer satisfaction. There are no warranties which extend beyond that which are specifically set forth in the two limited warranties above.*

Palram Americas reserves the right to change product specifications and/or information contained in this brochure.

Also Available:

Suntuf® Corrugated Polycarbonate Panels, SunLite® Multi-Wall Polycarbonate Panels, and Palruf® PVC Panels for residential, agricultural and commercial applications.



For detailed installation instructions visit www.PalramAmericas.com/SunSky and download the SunSky Installation Guide, or call Palram Americas at (800) 999-9459 to request a printed copy.



PALRAM AMERICAS
9735 Commerce Circle
Kutztown, PA 19530
Phone: 800-999-9459
E-mail: PalramAmericas@Palram.com

www.PalramAmericas.com/SunSky

Authorized Dealer